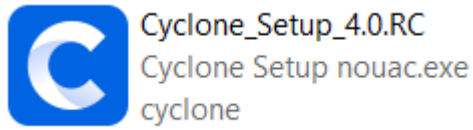
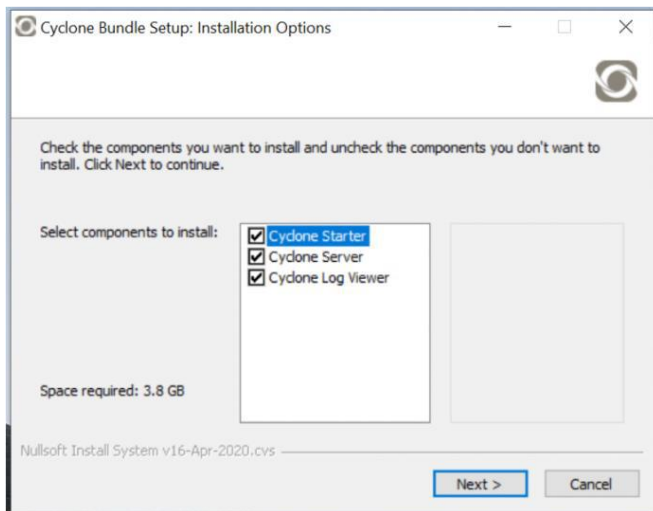


1. Install Cyclone Designer

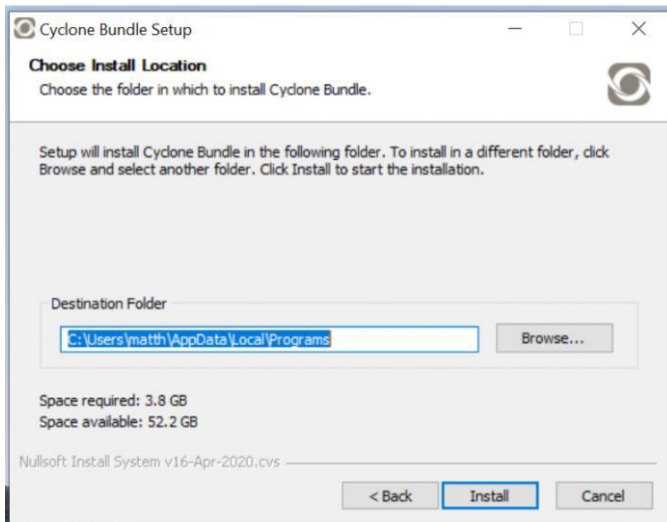
1. Double click the installer file “Cyclone_Setup_4.0.RC.exe” for the installation.



2. Select all 3 components: Cyclone Starter, Cyclone Server and Cyclone Log Viewer, and then click “Next”



3. Install the Cyclone bundle with default destination folder. (Do not install to the different folder)

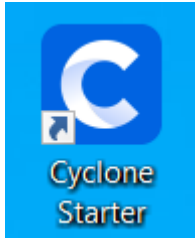


4. Once finish, click “close” to complete the installation.

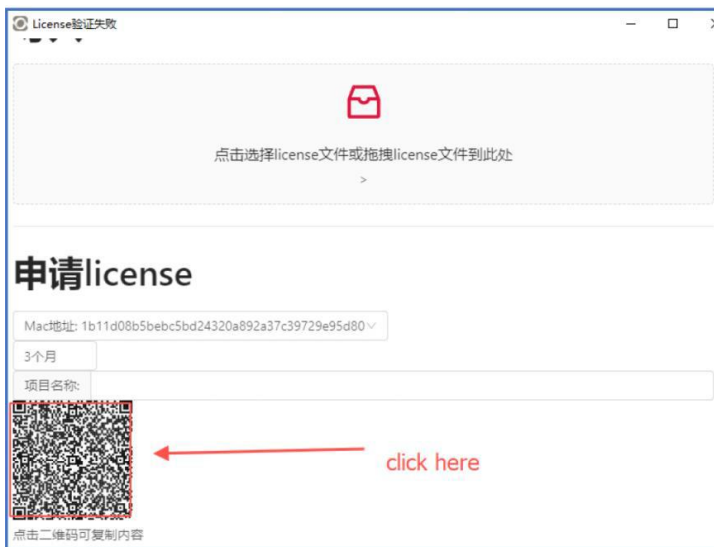
2. Cyclone Designer License Activation

2.1 Obtain MAC Address

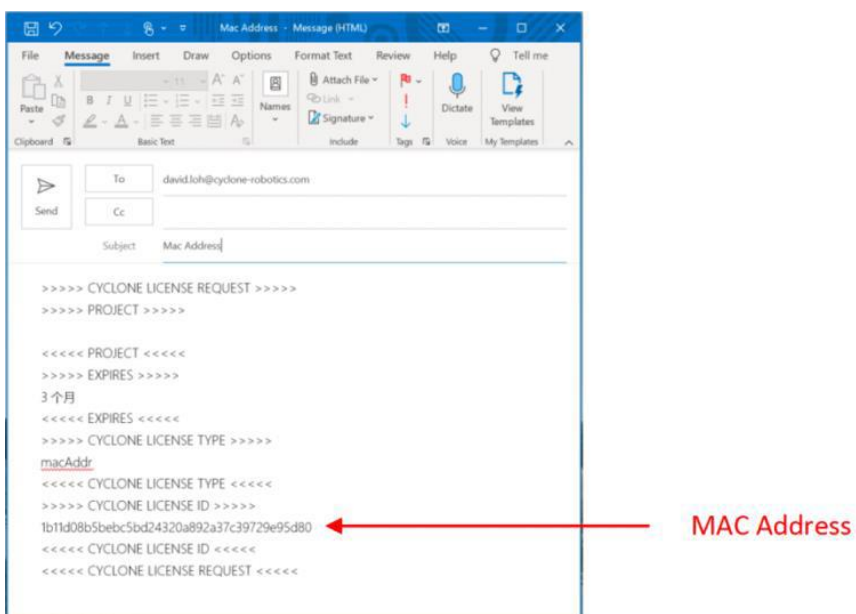
1. Double click "Cyclone Starter" to launch the Cyclone Designer



2. A "License verification fails" window will pop up after few minutes. Click on the QR code, the Mac address will automatically copy into your clipboard.

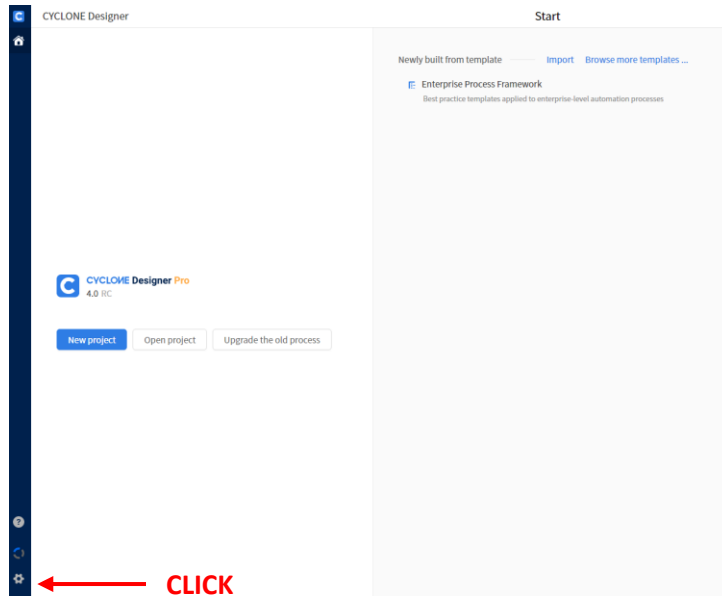


3. Paste it on the email body, then email the MAC address code to darren.lim@cyclone-robotics.com

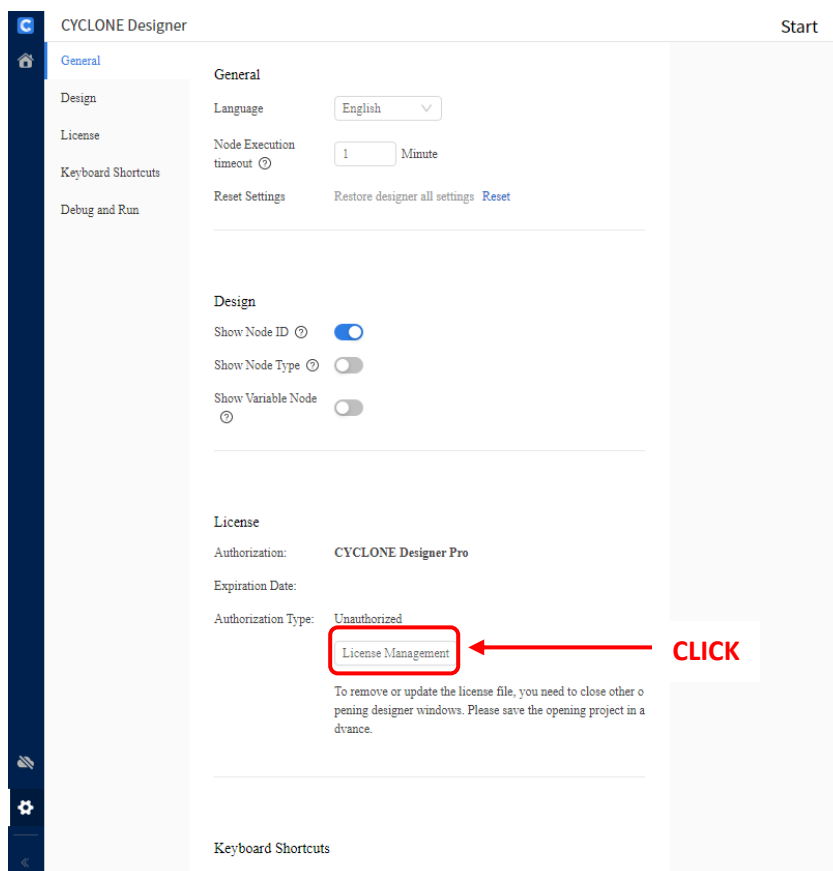


OR

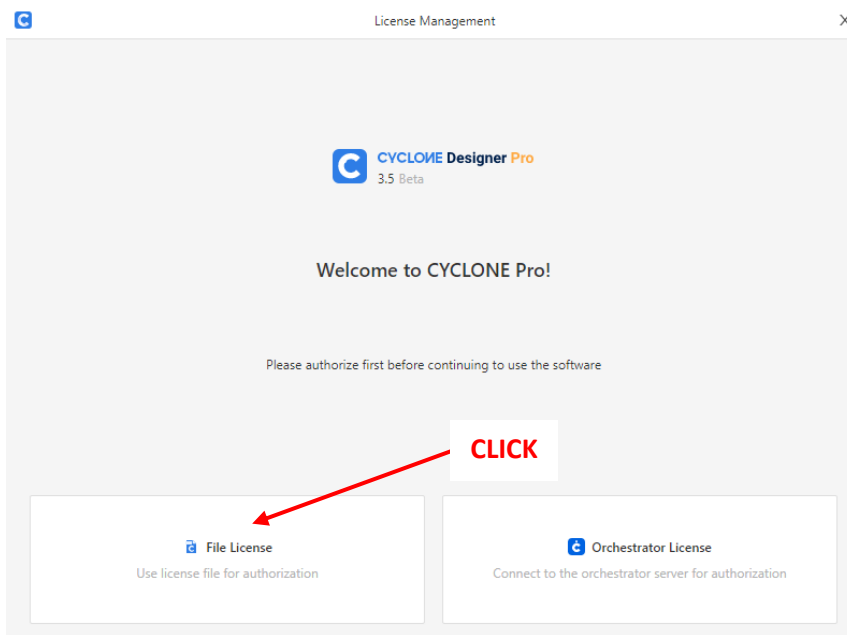
1. Launch the Cyclone Designer, click on the “Setting” icon at the bottom left corner of the CYCLONER Designer Main Window.



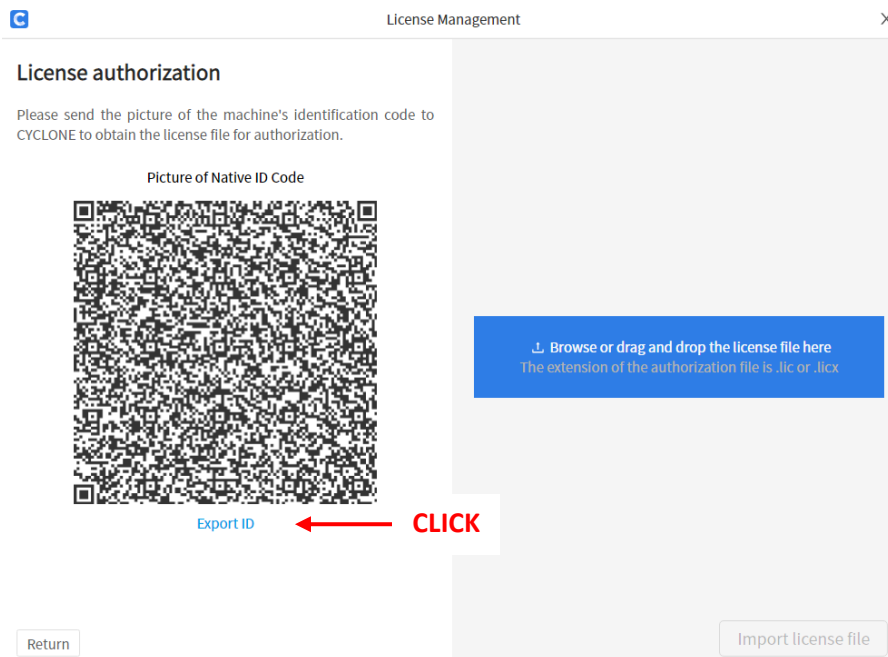
2. On the **License** panel, Click on “**License Management**” button.



3. On the “License Management” Windows, Click on “File License”.



4. On the next “License Management” windows, click on the “Browse or drag and drop the license file here”.



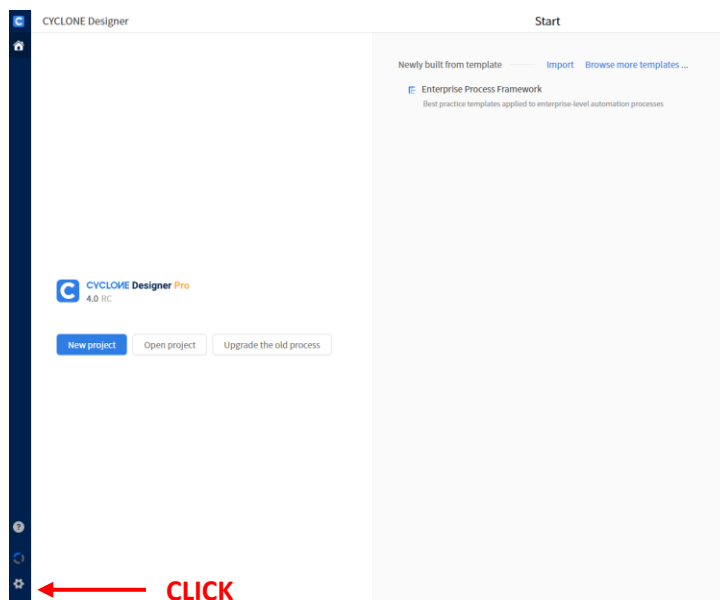
5. Select the folder to export the license.
6. Attach and email the QR code to darren.lim@cyclone-robotics.com
7. Upon receive the Mac address, we will reply with the Cyclone License Activation file (cyclone_license.lic)

2.2 Activating License

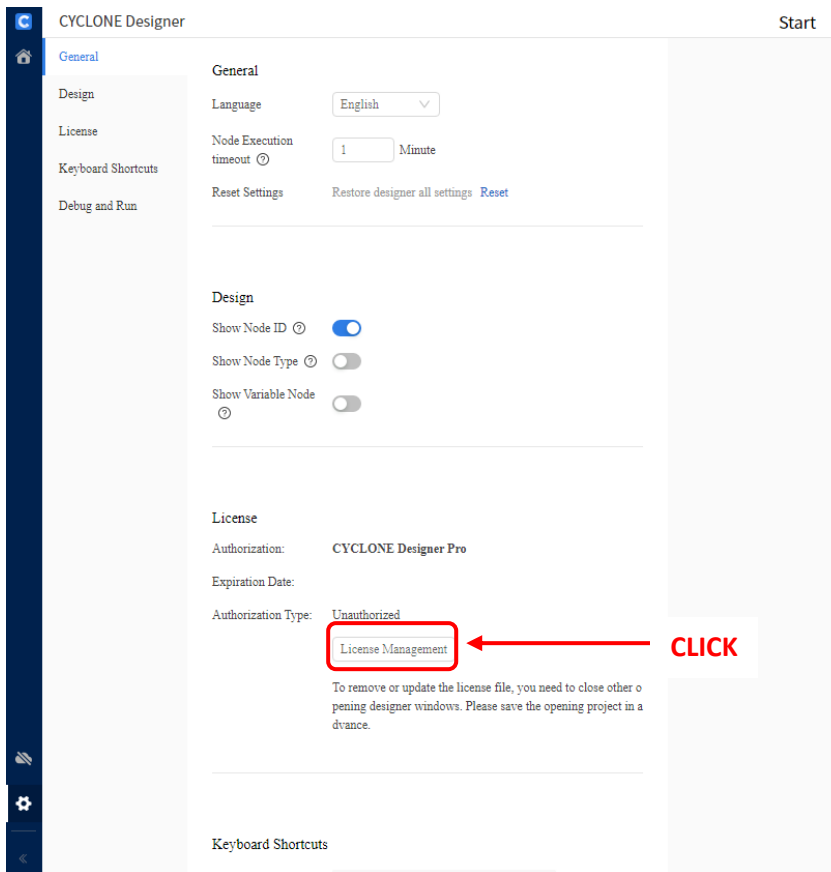
1. Once you have receive the license activation file (Cyclone_license.lic)
2. Launch the Cyclone Designer, the “License verification fails” window will pop up after few minutes. Drag the “Cyclone_license” file into the activation window as follow.
3. Close the “License verification fail” window and restart the Cyclone Designer App.

OR

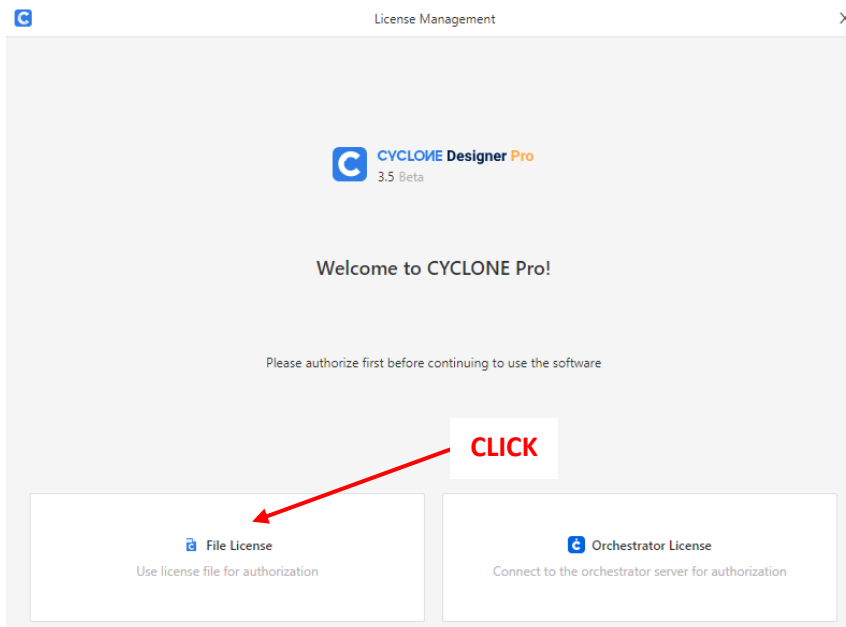
1. Once you have received the license activation file (Cyclone_license.lic)
2. Launch the Cyclone Designer, click on the “Setting” icon at the bottom left corner of the CYCLONER Designer Main Window.



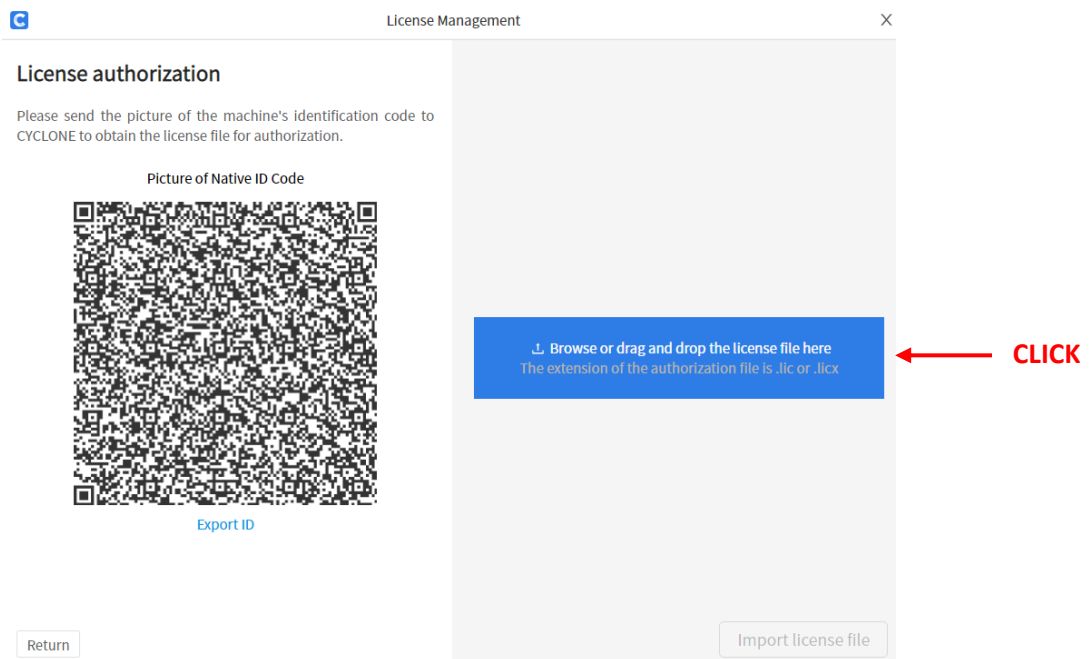
3. On the **License** panel, Click on **“License Management”** button.



4. On the **“License Management”** Windows, Click on **“File License”**.

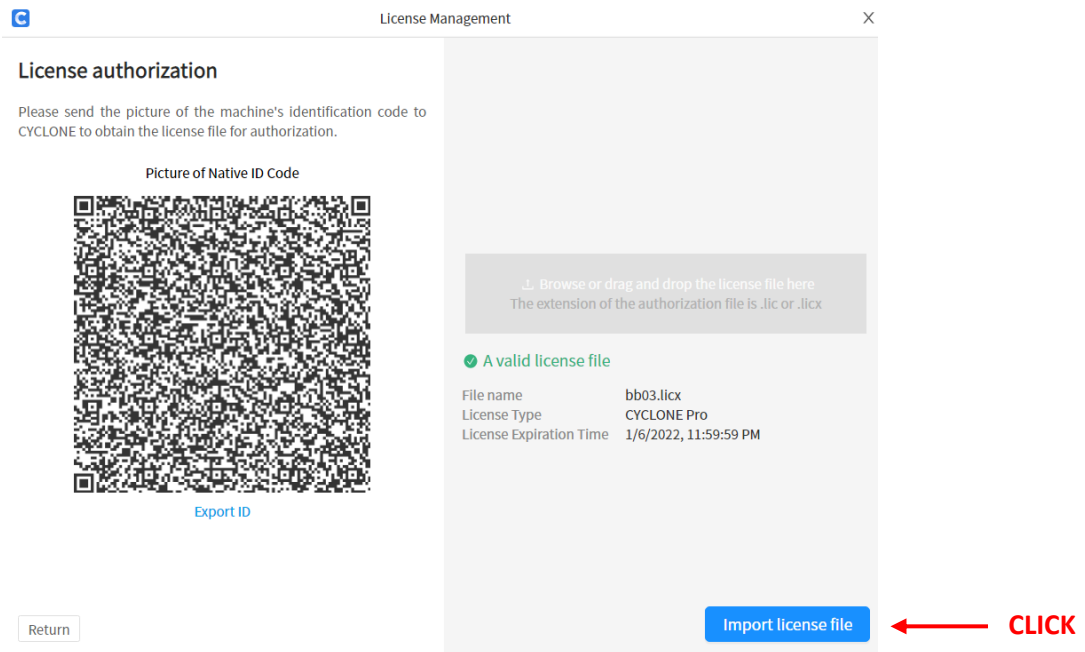


5. On the next “License Management” windows, click on the “Browse or drag and drop the license file here”.

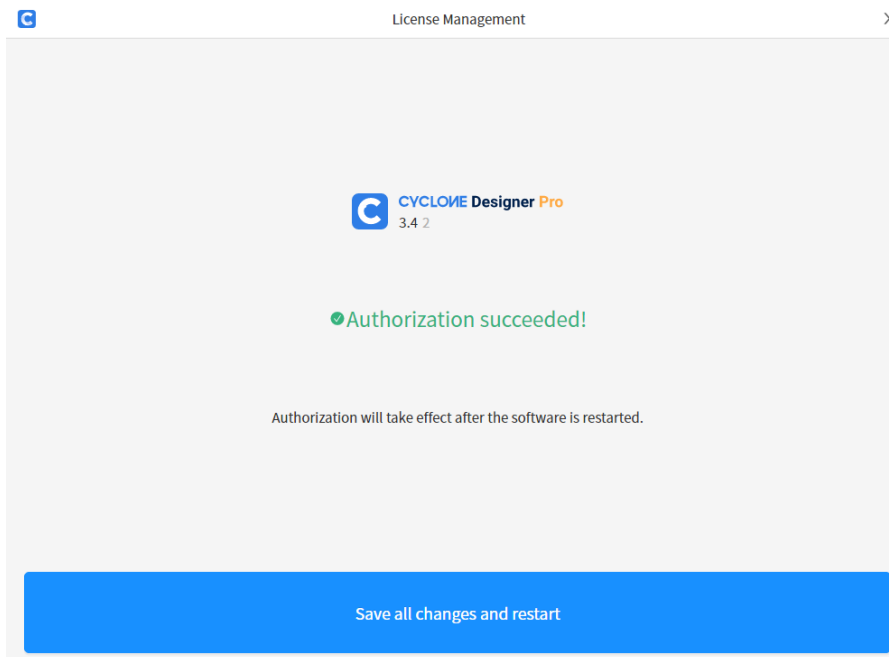


6. Select the folder where the license file is and click on the license file.

7. Click on “Import license file”.



8. Once "Authorisation succeeded!" windows pop up, Activation is successful.



9. Close the "CYCLONE Designer" window and restart the Cyclone Designer App.